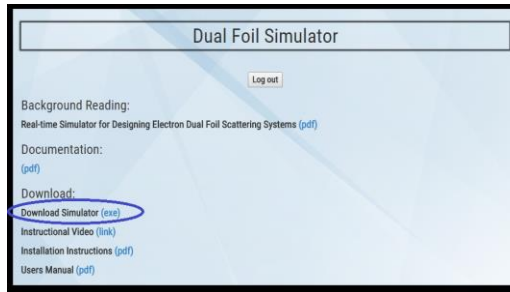
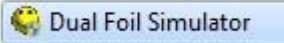


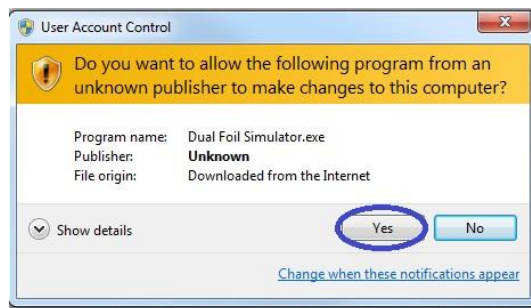
Dual Scattering Foil Simulator

Installation Instructions

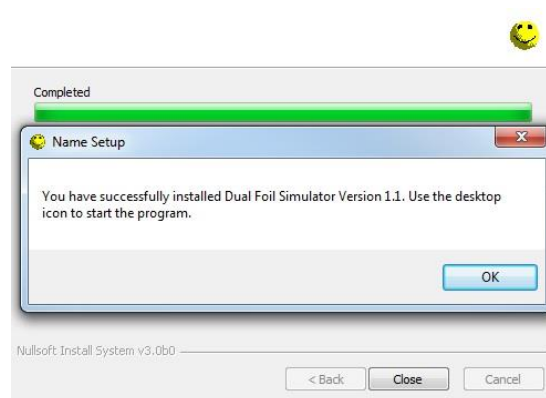
1. Click on the “Download Simulator (exe)” link on the Dual Foil Simulator page. This will download the installation file to your default download folder. The current version of the DSF simulator has only been tested for Windows XP and above. No version for Apple computers has been developed yet.



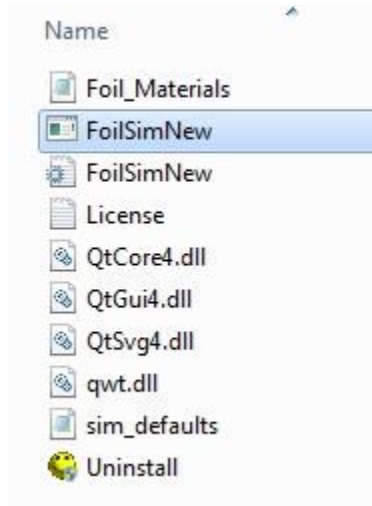
2. Open your default download folder and run the “Dual Foil Simulator” program with the smiley face icon. 
3. For windows 7 and later you may be asked to verify the program from an unknown publisher as shown below, click “Yes”.



4. This will install the program in your “C:\Program Files\Dual Foil Simulator Version 1.1\” folder by default. There currently is no option to install in a different directory. Upon a successful completion you should receive the following message:



5. The installation directory should contain the following files (see appendix for description of files):



6. You should find the following icon on your desktop:



7. Double click the icon to start the Dual Scattering Foil Simulator

FAQs

1. Q. Can I move the installation to a different folder?
A: Yes, but you must move all files in the installation directory to the new directory. You will also need to update the link in the desktop icon.

Appendix A

Description of Installed Files

Foil Materials.dat – Data file containing material data used to define the composition of the primary and secondary foils.

FoilSimNew.exe – Executable used to run the DSF simulator

FoilSimNew.ini – Configuration file used during the installation process

License.txt – Copyright and release information

QtCore4.dll – Dynamic C++ Library used by the executable

QtGui4.dll – Dynamic C++ Library used by the executable

QtSvg4.dll – Dynamic C++ Library used by the executable

gwt.dll – Dynamic C++ Library used by the executable

sim_defaults.txt – Data file containing the default values for the simulation settings

Uninstall.exe – Executable used for uninstalling the DSF simulator